



Rectangular Coverings.

MODERN VARIETY FOR ROOF AND FAÇADE.

Rectangular Coverings. Naturalness in its clearest form.



Slate is a pure natural building material for roofs and façades for generations appreciated for its robustness and its high aesthetics. For a long time slate was reserved for the sophisticated architecture. Status symbol for prosperity and building culture.

By progressive exploitation and new economical types of covering slate has become reasonable and co-ordinates perfectly with modern, straight-lined architecture.

Today the prehistoric rock shows a surprisingly young face. Especially the rectangular coverings offer with many variations an almost unlimited scope for design to building owners and architects.

Slate masterfully draws attention to roofs and façades. With the vigour of the natural material.

Natural accents for architecture
in keeping with the times.

Rectangular Coverings for roof and façade.

The sustainable handling of natural resources is more important than ever. Slate is a completely natural material with overwhelming building-physical characteristics.



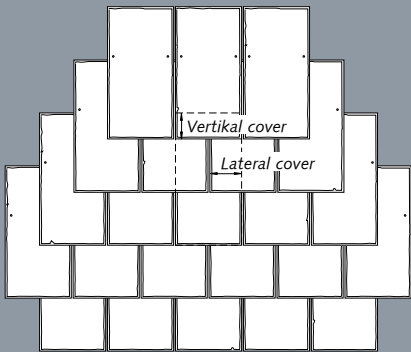
Can one build the future?

"Thinking ahead, planning purposefully, creating clarity. We follow this principle privately in our profession as architects. Successful architecture is for us a symbiosis of creativity, aesthetics and effectiveness.

Is it not better to participate in designing the spirit of the times than just following it?"



Rectangular Double Covering on the roof. Natural accent for modern architecture.



Rock format				
	60 x 30	40 x 25	35 x 25	30 x 20
Roof pitch	50 x 25	40 x 20	35 x 20	30 x 20
Regular roof pitch	Vertical covering in mm			
> 22 °	120	—	—	—
> 30 °	100	100	—	—
> 40 °	80	80	80	—
> 50 °	—	60	60	60

The following third layer has to cover the first one in accordance with the table. For this purpose the roof pitch is decisive.

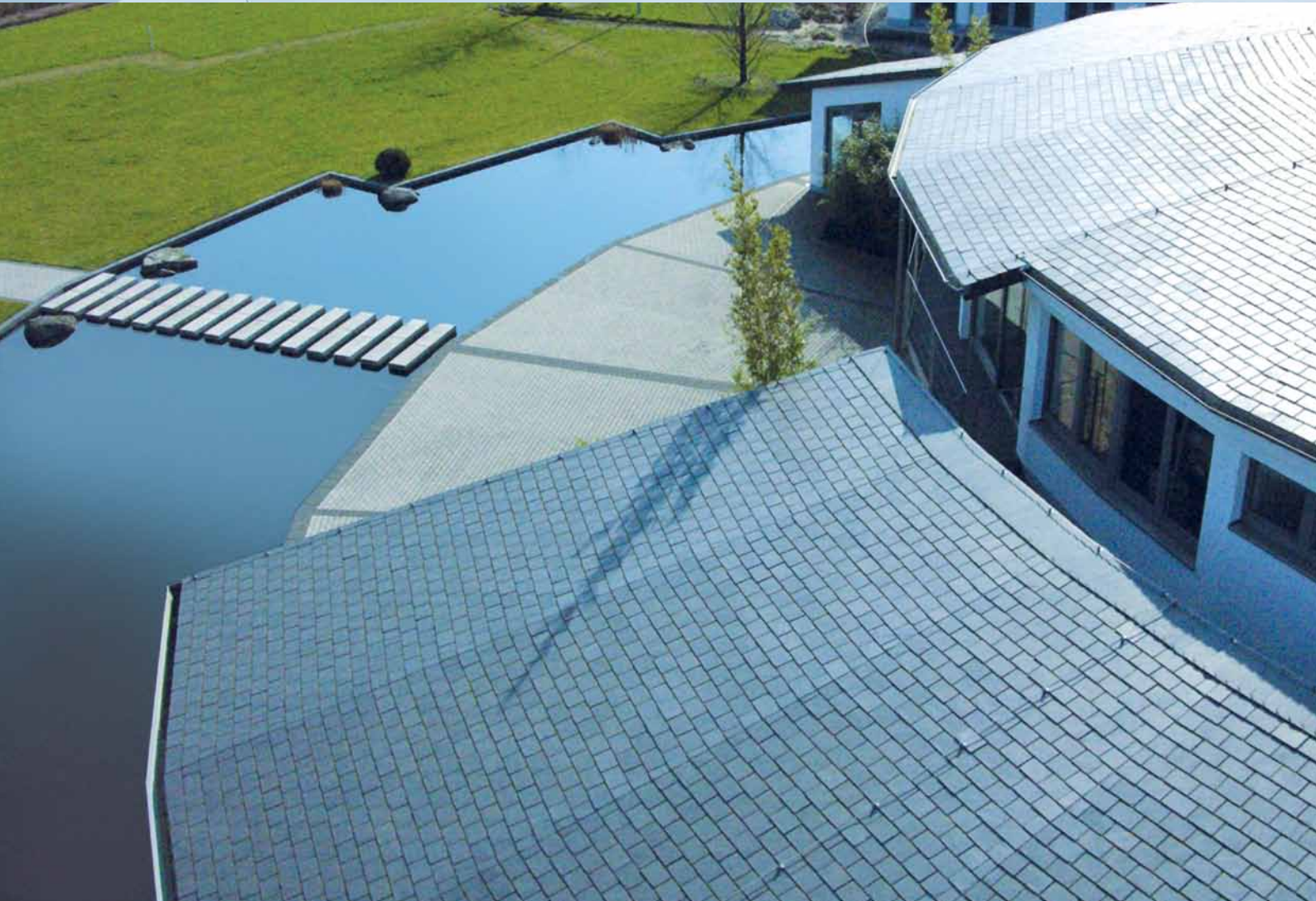
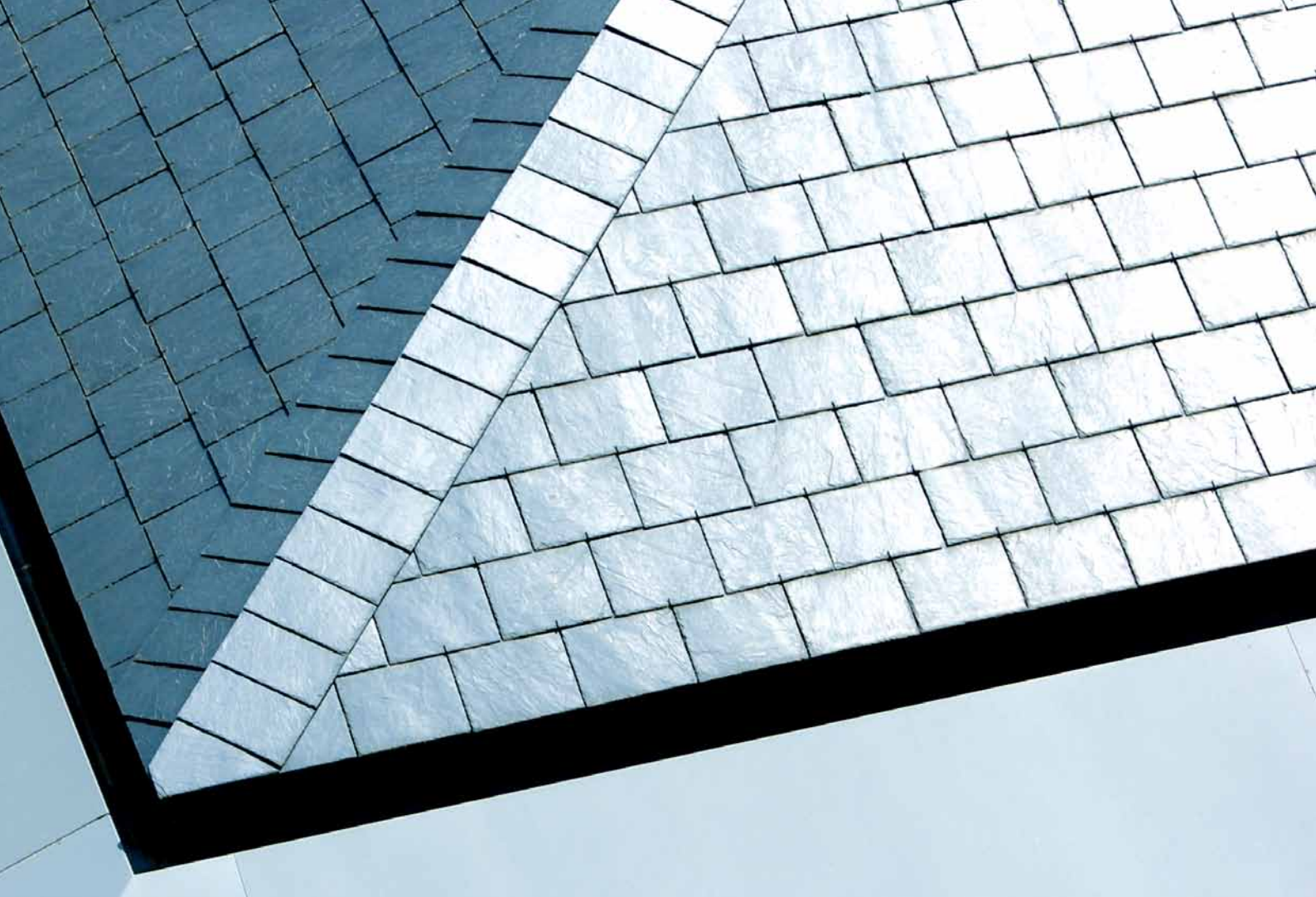
The rectangular double covering is able to adjust to every roof geometry. Filigree details of the roof such as valleys are also not a problem.



The rectangular double covering is one of the most popular types of slate roofing of modern roofs. By its straight-lined optics it harmonises with a clear architecture and gives natural charm to every roof.

It does not matter whether it is a new building or a renovation – a slate roof with rectangular double covering is extremely robust, durable and by its efficient laying surprisingly inexpensive.

Ideal for building owners and renovators who have to take care of their budgets.



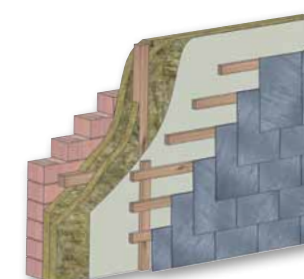
Rectangular Double Covering for the façade. Robust and pleasantly inexpensive.



Whether at detached family houses or at large building projects – the rectangular double covering is a preferred type of slate covering at the façade.

At the façade the rectangular double covering also emphasises up-to-date architecture. Its refined covering image harmonises with every architectural style.

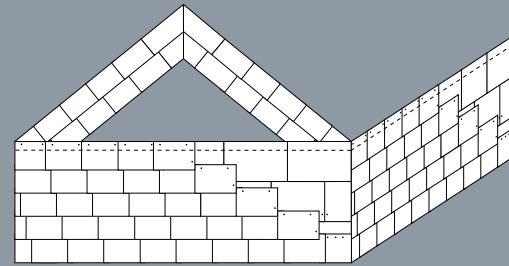
The silky gloss of the slate also clearly enhances plain façades and offers protection for generations.



A hung façade lastingly prevents at new building and restoration the penetration of humidity and simplifies the installation of an insulation.

In addition it creates a healthy climate of the home and meets all the standards of the modern building physics.

The **Horizontal Cladding.** Clear lines. Pleasant modesty.



At the horizontal cladding the stones are covered with horizontal displacement. A calm, restrained cladding image is created.

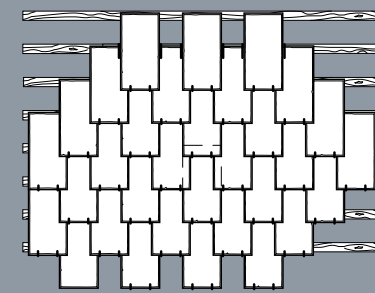


By the uncomplicated laying technique and the high utilisation of the material the horizontal cladding is among the particularly reasonable types of slate claddings and is therefore popular with private owners of buildings as well as with planners of large building objects.





The **Drawn Cladding** as playground for light and shadow.



The drawn cladding can be realised with any rectangular format and can be adjusted to the geometry of the building minimising the clippings.



The drawn cladding generates lively geometric structures at the façade. That makes it particularly interesting for large façade surfaces.



The classic among the rectangular covers. A lively light and shadow play is created by the drawn-apart overlap of the coping stones.

This laying technique uses the rectangular format of the slate extremely rationally.



The **Underlaid Rectangular Cladding.** Effective and filled with excitement.



The underlaid rectangular cladding masterfully draws attention to the sophisticated architecture and convinces by high economic efficiency.

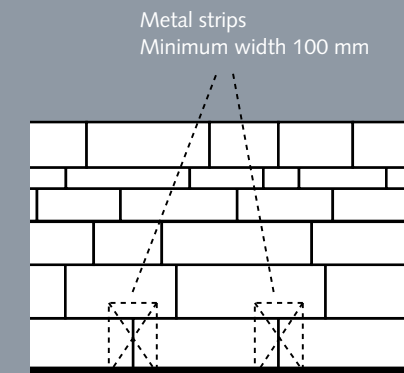
Striking shadow gaps and the stainless steel cramps skilfully used as design element generate an extraordinarily cladding image at the façade.

During the day the shadow gaps and the natural structure of the slate brighten up the façade.

Lit up during the night the stainless steel cramps generate an interesting sparkle.



The **Dynamic Cladding.** Sturdy and unique cladding image.



The dynamic cladding is carried out as a single coverage. The 3 – 5 mm wide vertical joints are backed up with metal strips.

Feasible stone formats W x H (cm)	
60 x 30	37 x 15
50 x 30	35 x 25
42 x 16	35 x 20
42 x 14	30 x 20
50 x 25	30 x 15
40 x 25	25 x 20
40 x 20	25 x 16

The dynamic cladding is installed with rows of layers of different heights. The vertical joints are also not regularly repeated so that no grid is created in the cladding image. The layout of the rows of layers and vertical joints can be individually planned to the greatest possible extent.

The dynamic cladding is a new type of cladding especially developed for the modern architecture.

Its irregular cladding image reminds of the optical effects of a block masonry and perfectly unfolds the sturdy natural strength of the slate.

The extension building of the school centre Ailingen is the prototype of the dynamic cladding.

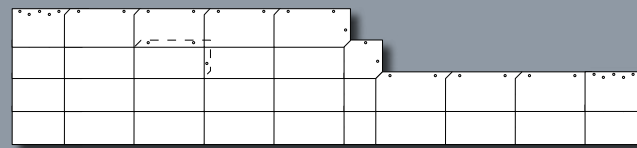
The design of the façade draws a lot of attention in professional circles.



The **Variable Rectangular Cladding.** Surprisingly versatile. Convincingly different.



Vertical and horizontal overlap amount by standard to 5 cm, as a result of trimming the corners.



The strictly geometric cladding image follows the lines of modern architecture. The silky gloss of slate generates exciting contrasts.



The variable rectangular cladding offers a large scope for an individual design of the façade. By the combination of different rectangular formats this type of cladding permits an uneven cross joint grid with an individual touch.

The waste material and thus also the material requirements are minimised. This makes this cladding extremely economical.

It is the mixture that matters:

At this bungalow the façade is designed in the variable rectangular cladding and the roof in the rectangular double covering.



The **Linear Rectangular Cladding.** Simply different.

Three examples for the linear rectangular cladding:



Green **ColorSIN®** backed with blue-grey **InterSIN®**.



Blue-grey **InterSIN®** backed with stainless steel strips.

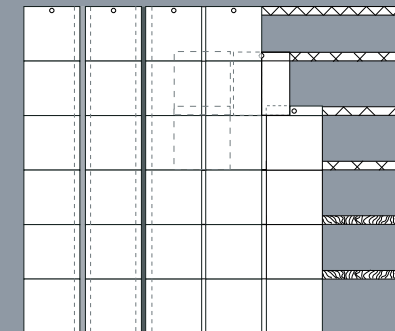


Red **ColorSIN®** backed with blue-grey **InterSIN®**.

The maximum vertical overlap amounts to 5 cm. The lateral overlap of the face stones onto the stones or strips placed underneath also amounts to 5 cm. The visible layer shall be carried out with a vertical joint at least 3 to 6 mm wide.

The following rectangular formats are available for the linear rectangular cladding:

60 x 30 cm, 50 x 25 cm, 40 x 25 cm, 35 x 25 cm, 40 x 20 cm, 35 x 20 cm, 30 x 20 cm.



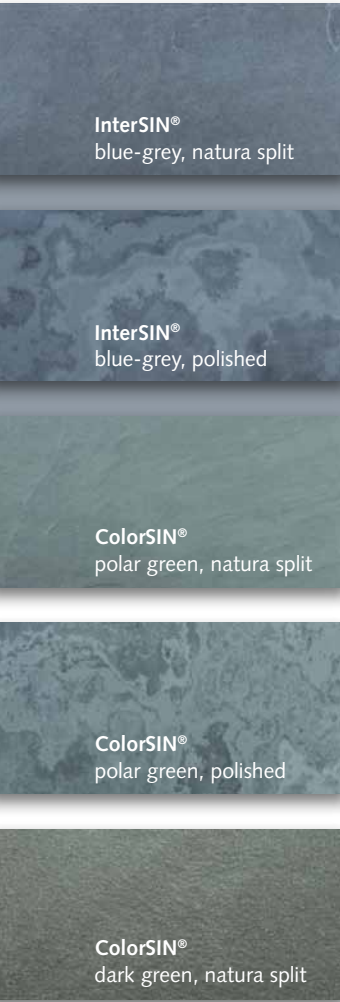
The linear rectangular cladding works with vertical joints with variable widths. By using different types of slate for the face stones and the backed stones surprising accentuations of the colours can be achieved.

Entirely different materials such as stainless steel strips can also be used for the backed surfaces used. This opens an enormous leeway of the design for planners and building owners.

The linear coverage generates a strictly geometric overall image and emphasises modern buildings in their clear design.



The Symmetrical Cladding with visible fixtures.

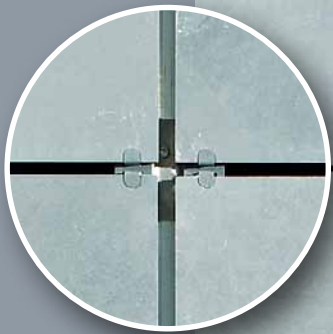


Cramp technique

The slate stones are simply hung with stainless steel cramps into an aluminium subframe.

The system is so designed that thermal expansions are caught.

Any slate formats up to a size of 60 x 60 cm with a thickness of only a centimetre facilitate the perfect adjustment to the geometry of the building.



Three colours of slate in different surfaces offer planners freedom for extravagant façade designs.

Ask for our detailed prospectus about the symmetrical cladding.

Economic efficiency, laying without problems and unique aesthetics – these are the standards of modern architecture to highly insulated back-ventilated façades.

The symmetrical cladding is an innovative façade system developed by Rathscheck, fulfilling these requirements and defining the slate façade in a completely new way.



Extraordinary ideas can also be realised with the symmetrical cladding. Here the type of cladding for façades has been projected to the roof.

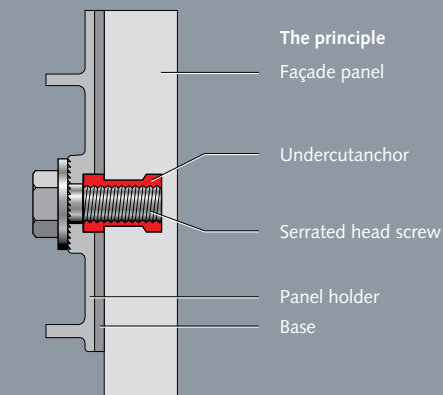


The **Symmetrical Cladding** with invisible fixture.

Undercut technique

At the undercut technique at a slab of slate, at least 10 mm thick, an undercut blind hole drilling, approx. 7 mm deep, is worked into its rear side and the anchor is inserted free of expanding force and positively locking.

One of the advantages of the invisible undercut anchor is the variety of the formats and the joint widths. Thus the façade can be designed completely freely.



With the undercut technique the fastening of the slate panels, as from one centimetre thick and up to 2 x 1 m large, is covered and not visible at the viewed surface.

This complies with the requirements of many architects for undisturbed, aesthetic slate façades without any noticeable fixing materials.

The symmetrical cladding with undercut technique is a particularly safe fixing measure, taking care of materials, with a slim sub-structure and a low weight per square metre.



Undercut anchors safeguard an undisturbed surface effect of the symmetrical cladding.

Coloured slate **ColorSIN®**. As versatile as nature.



The historic city hall in Wiesbaden is crowned by a roof in rectangular double covering.

The decorative belts are worked in with red and green **ColorSIN®**.



In addition to the classic blue-grey slate the nature also generated slate in additional shades of colour. We call this coloured slate **ColorSIN®** – in natural fresh green shades and royal red.

In addition to the all-over coverings **ColorSIN®** allows unique accentuations that can often be found at classical buildings.

Modern architecture also benefits from this great variety and it offers enormous opportunities for individual design.

This house with a slate façade in green **ColorSIN®** appears like a monolith.



Slate is not always slate.

Living and dwelling in harmony with nature.



Our mine Katzenberg in Mayen. Here the valuable **Moselschiefer®** is exploited.

Only the best rock layers are further processed for coping stones and are awarded the rating **Moselschiefer®**.

Our **InterSIN®** production in Spain: The largest slate mine of the world.

Here constant strict controls also guarantee a constant high quality.

Sustainable building is a stipulation of the time. The goals are economically efficient, environmentally friendly construction methods saving resources. Sustainable buildings stand for a high quality of housing by comfort and healthy building materials, low costs for energy and maintenance and thus for a high stability of value of the property.

The use of building materials that are environmentally friendly produced, require little or no care, show a long durability and can be disposed of without any problems applies to such involved building.

Slate is a natural, durable material for roofs and façades. Therefore it is rightly described as ecologically valuable. In particular its very long durability of often more than 100 years justifies this reputation.

For centuries important references have testified the quality and stability of this natural rock.

An Environment Product Declaration (EPD) also confirms these empirical values for slate of the trade marks **Moselschiefer®**, **InterSIN®** and **ColorSIN®**.

Environment Product Declarations form the data basis for the ecological valuation of a building. In the declaration statements are made about the use of energy and resources as well as about the technical characteristics in order to be able to reliably determine factors such as durability or heat insulation of the building. With them the sustainability of a building is identified.

With testing methods developed by ourselves, by constant control of our own production processes inland and abroad as well as of the productions of our international strategic partners we look after the observance of the Rathscheck quality criteria.

At the same time we are additionally supported by independent testing institutions.

The **Rathscheck Quality System** exceeds by far the demanded national and European test standards and is based upon the experiences over decades in the production of slate for roof and façade. These created a test system for the assessment of worldwide slate qualities. Only the best slate deposits comply with our strict requirements.



- Best slate, only from tested deposits
- Continuous control of the quality of the stones
- Constant supervision of the production processes
- Strict selection of the completed coping stones



- ▶ Ecosensitive extraction and production
- ▶ Ecological and healthy
- ▶ Extremely long durability
- ▶ Can be rebuilt very well
- ▶ Best assessment of sustainability



Institut Bauen
und Umwelt e.V.

What you should know about slate ...

www.rathscheck.com
The comprehensive online slate portal.



Natural

Millions of years ago nature created an excellent material for us. A material that is exploited and processed unadulterated and without any additives. Slate is optimal in building physiology.

It is a natural healthy material and knows no problems with its disposal.

Robust

The life cycle of many products becomes shorter and shorter. Some of them disappear as fast as a rose bloom. Slate, on the other hand, is timeless and its durability is hardly reached at all. Times of 100 years and more are no rarity.

During the exploitation of the slate and its further processing above ground we use strict standards. Testing methods developed by ourselves guarantee a consistent slate quality.

Versatile

The different types of covering harmonise with all the architectonic styles. From classic buildings up to modern architecture slate sets standards at the roof and façade by its aesthetics.

Slate is a definitely solid decision for life and enjoys a remarkably increasing demand.

Good value for money

By the further development of the processing methods we gave the valuable building material slate good value for money. In comparison between cost of purchase and durability slate is extremely economical. The development of rational covering techniques and formats of coping stones also contribute to the fact that today slate is within everybody's means.

A roof or a façade covered with slate sustainably increases the constant value of real estate.

Modern

Slate meets all the requirements of modern building physics. It harmonises with all the current building materials from glass via concrete to steel and brightens up modern architecture with powerful contrasts.

Slate is timeless – never only fashionable, but always modern.

Aesthetic

A purely natural material of such precious quality is beyond all shadows of doubt. The varied classical and modern covering images for roofs and façades give every building very special aesthetics of lasting value:

Timeless, powerful and lively.

Straight from the movies – enjoy slate

With interesting movies we provide you with extraordinary insights into the fascinating world of the slate, a rock that with its charisma and durability distinctively speaks for itself.

- Discover with slate the special connection between human being and nature.
- Experience the careful exploitation of the valuable natural resource.
- Be inspired by the creative handling with slate and modern architecture.

You may also ask for the films as DVDs.



Under www.rathscheck.com we offer you an extensive slate portal with much information and aspects worth knowing about the unique building material.

Discover the beauty of slate on the most different buildings in our extensive picture gallery.



Slate.

Naturalness in Perfection.



Our expert consultants are available for a personal consultation for you free of charge.

Because we see ourselves not only as slate producers but also as competent partners around the architecture with the natural building material slate.

We help you with the planning, advise you concerning all the issues and look after you during the realisation of your project.

A call is sufficient: Tel. +49 (0) 26 51 / 9 55-0

Rathscheck 
S C H I E F E R

**Rathscheck Schiefer
und Dach-Systeme**

St.-Barbara-Straße 3
D-56727 Mayen-Katzenberg
Germany

Phone +49 (0) 26 51 / 955-0
Fax +49 (0) 26 51 / 955-100

info@rathscheck.com
www.rathscheck.com



SCC-13